



INSTRUCTION BULLETIN

No. 9010947
Machine: T12
Published: 05-2013
Rev. 00

NOTE: DO NOT DISCARD the Parts List from the Instruction Bulletin. Place the Parts List in the appropriate place in the machine manual for future reference. Retaining the Parts List will make it easier to reorder individual parts and will save the cost of ordering an entire kit.

NOTE: Numbers in parenthesis () are reference numbers for parts listed in Bill of Materials.

Installation instructions for **kit number 9009817**

SYNOPSIS:

This kit contains the parts needed to replace the rear squeegee assembly on T12 scrubbers.
Please follow step-by-step instructions.

SPECIAL TOOLS / CONSIDERATIONS: NONE

(Estimated time to complete: 15 - 30 minutes)



PROTECT THE ENVIRONMENT

Please dispose of packaging materials, old machine components, and hazardous fluids in an environmentally safe manner according to local waste disposal regulations.



Always remember to recycle.

PREPARATION:

1. Park the machine on a clean level surface, turn off the machine, and remove the key.

FOR SAFETY: Before leaving or servicing machine, stop on level surface, turn off machine, and remove key.

INSTALLATION:

1. Disconnect the vacuum hose from the rear squeegee assembly. (Fig. 1)



FIG. 1

2. Loosen both squeegee mounting handles. (Fig. 2 / Fig. 3)



FIG. 2



FIG. 3

3. Pull the rear squeegee assembly from the machine. Discard the removed squeegee assembly. (Fig. 4)



FIG. 4

4. Install the new rear squeegee assembly onto the machine.
5. Connect the vacuum hose to the rear squeegee assembly.
6. Level the rear squeegee assembly and set the rear squeegee deflection. Refer to *LEVELING THE REAR SQUEEGEE* and *ADJUSTING THE REAR SQUEEGEE BLADE DEFLECTION* in the *MAINTENANCE* section of the Operator Manual for instructions how to level rear squeegee and set the rear squeegee deflection.

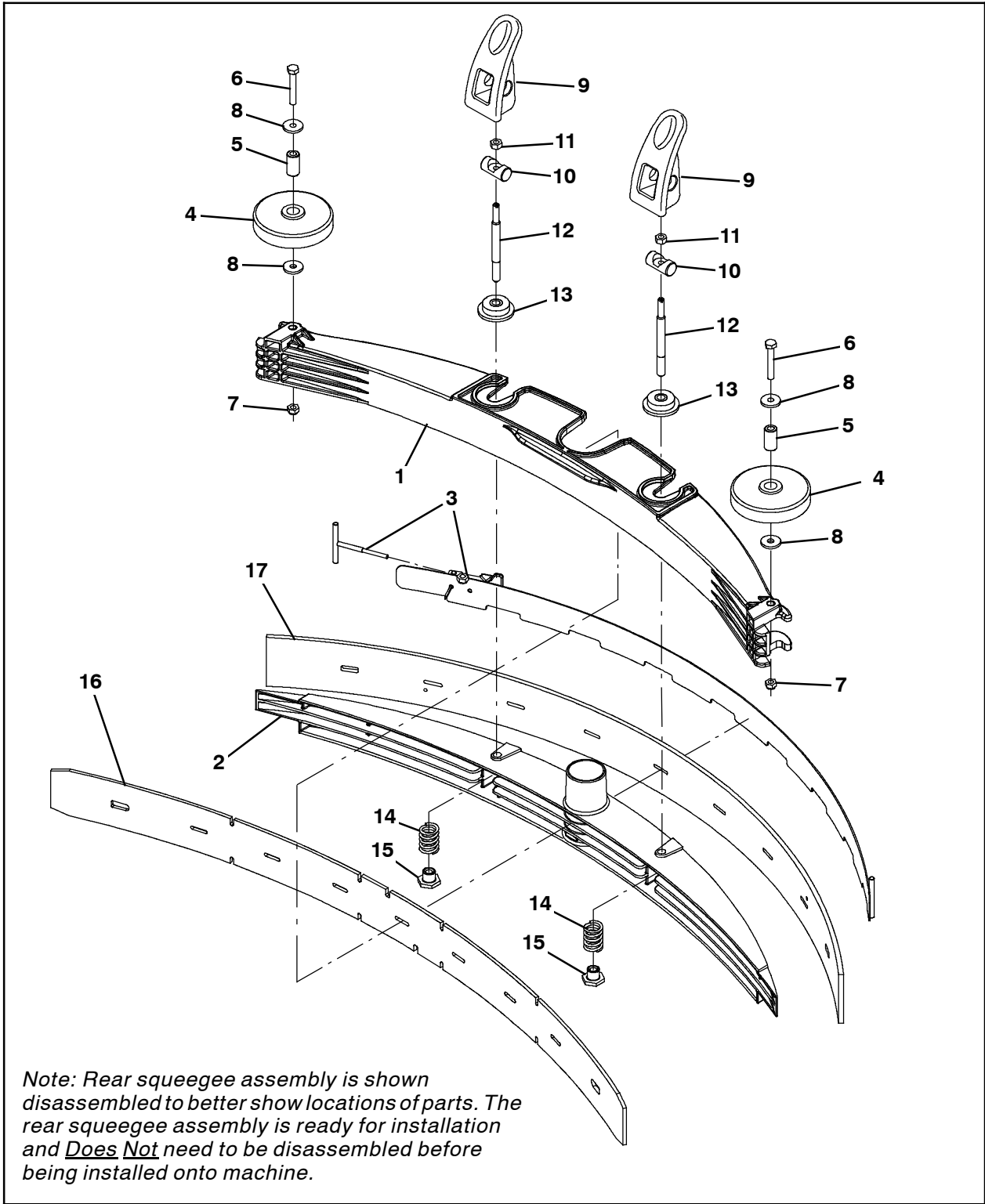


FIG. 5

Bill Of Materials For Squeegee Kit, Rear, CI [T12] - 9009817

	Ref.	Tennant Part No.	Description	Qty.
▽		9009817	Squeegee Kit, Rear, CI [T12]	1
▲	1	1200219	Frame, Sqge, Outer	1
▲	2	1200218	Frame, Sqge, Inner	1
▲	3	1200466	Clamp Wldt, Retainer, Sqge	1
▲	4	363162	Wheel, 04.0d 0.89w 0.64b	2
▲	5	363301	Sleeve, P/M, 0.34b 0.63d 1.2l, Bnz	2
▲	6	49694	Screw, Hex, M8 X 1.25 X 50, SS	2
▲	7	08713	Nut, Hex, Lock, M8 X 1.25, NI, SS	2
▲	8	1017218	Washer, Flat, 0.32b 1.00d .12, SS	4
▲	9	1052532	Grip, Lock	2
▲	10	1055396	Pin, 0.63d, 02.0l [W/Cbore, M8 Screw]	2
▲	11	07786	Nut, Hex, Std, M8 X 1	2
▲	12	1057407	Rod, Thrd, 2end, M8x1.25/ M10x1.5 04.7l	2
▲	13	1055506	Ring, Mtg, Sqge, .38l	2
▲	14	1064770	Spring, Cmpr, 0.98od .13wir 01.3l, SS	2
▲	15	391345	Nut, T, M10 X 1.50 X 0.62od X 0.5l	2
▲	16	1200383	Blade, Sqge, Front, 42.59l [Linard]	1
▲	17	1200384	Blade, Sqge, Rear, Linatex	1

TENNANT COMPANY
P. O. Box 1452
Minneapolis, MN 55440-1452